

COLOR, REINFORCEMENTS & FILLERS FOR ENGINEERED THERMOPLASTIC RESINS

SPECIALTY THERMOPLASTIC COMPOUNDS

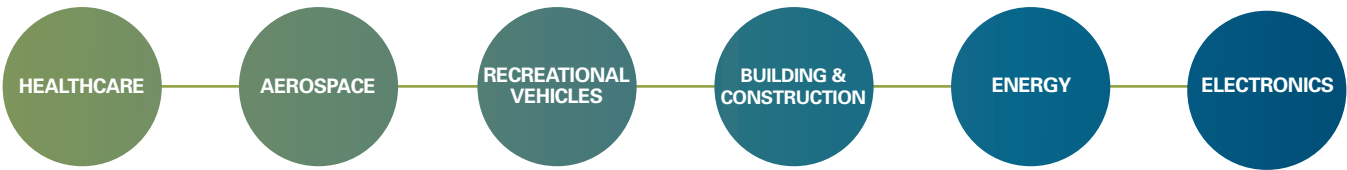
We Offer:

- Broad range of thermoplastic resins
- Precolor and custom compound development
- Speed, service, and technical expertise
- Global manufacturing capabilities

Industry Standards



MARKETS



Material Benefits:

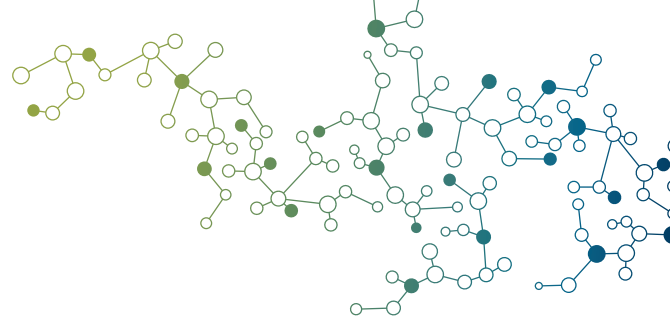
- Clear, tinted and opaque pre-colored compounds
- Blends and alloys provide chemical and impact resistance
- Flexible elastomeric compounds for instrument overmold to ensure anti-slippage
- Radiopaque compounds for visibility under x-ray and fluoroscopy applications
- Wear and friction compounds
- Electrically active alloys and compounds
- Structural compounds

LOCATIONS

- Morrisville, PA
- Swedesboro, NJ
- Suzhou, China



MATERIALS & SERVICES



UNBIASED MATERIAL SELECTION & SERVICES

Resin Families

- ABS
- Acetal
- Acrylic
- ASA
- HDPE
- LCP
- LDPE
- Nylon
(PA6, PA66, PA11, PA12, PA610, PA612, etc.)
- PAEK
- PARA
- PBT
- PC
- PC/ABS
- PC/PBT
- PC/PET
- PEI
- PEEK
- PET
- PP
- PPA
- PPS
- PPSU
- PS
- PSU
- TPE, TPU, TPV

Services

- Color Design / Compound Development
- Custom Compounding
- Customer Toll Processing
- Customer Trials
- Flexible Lead Times
- Fully Equipped In-House Color & Testing Labs
- IQ/OQ/PQ Technical Molding Support
- No Minimum Order
- Production in U.S. & China

Special Effects & Performance Technologies

- Antimicrobials
- Antistats
- Carbon Fiber
- Density Modifiers
- Flame Retardants
- Glass Fiber
- High Specific Gravity
- Impact Modifiers
- IR Light Management
- Laser Welding Additives
- Lubricants / Release Agents
- Radiopacifiers
- Stainless Steel Fiber
- Thermally Conductive Additives & Fibers

Americhem® Products

- InStruc™ Structurally Reinforced Compounds
- InLube™ Internally Lubricated Compounds
- InElec™ Electrically Active Compounds
- nShield™ Antimicrobial Compounds
- ColorRx® Medical Compounds
- ColorFast® Engineering Compounds
- Surlyn Reflections Series®
- InTherm™ Thermally Conductive Compounds

Products Licensed by Solvay

- Amodel® PPA Resin
- AvaSpire® PAEK Resin
- Radel® PPSU Resin
- Udel® PSU Resin
- Xydar® LCP Resin



americhem®

PERFORMANCE | SOLUTIONS | TRUST



World Headquarters • 2000 Americhem Way • Cuyahoga Falls, OH 44221 • Tel: +1.330.929.4213 • www.americhem.com
Americhem Engineered Compounds • 20 Progress Drive • Morrisville, PA 19067 • Tel: +1.215.736.1126

Surlyn Reflections Series® is a registered trademark of E.I. duPont de Nemours and company and is used under license by American Engineered Compounds. Amodel, AvaSpire, Radel, Udel, and Xydar are registered trademarks of Solvay.